

Dancing to the Oldies

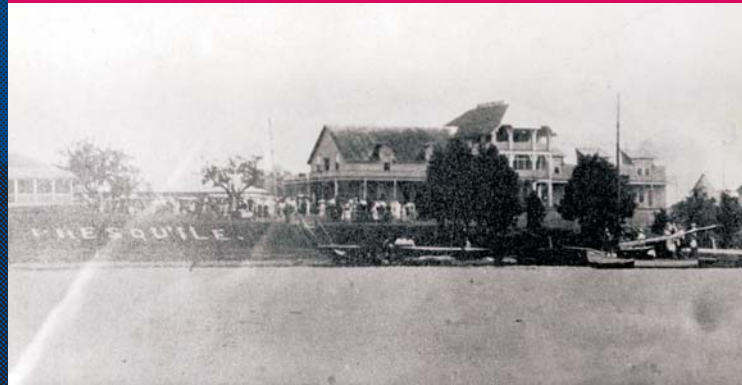
Until the early 1970's, this location was the home of the Presqu'ile Hotel and Dance Pavilion. For almost half a century, big name bands and well-known entertainers attracted visitors from far and wide to this summer playground. After the Second World War, attendance at the facility began to decline. The hotel was closed and demolished in 1972. The land was divided and sold for the residential lots you can see today.

The Government Dock was the focal point on the peninsula. Originally, most visitors who came for picnics, camping or dances, etc. arrived by boat from the mainland. Many ferries from Rochester, Toronto, Brighton and other areas stopped here regularly. Although most visitors and residents now arrive by road, many yachts and other boats still use the dock.

The original Government Dock was made of limestone and gravel.



The Presqu'ile Hotel in the early 1970's, before it was dismantled.



Dances took place six nights a week at the Presqu'ile Dance Pavilion with music supplied by famous artists such as Guy Lombardo.

